

TRAIL ETIQUETTE

ROTHESAY TRAILS ARE MULTI-USE



Please make them safe for everyone to enjoy by following these guidelines:

- Be courteous.
- Obey all signs.
- Use lights at night.
- Don't block the trail.
- Keep right & pass on the left.
- Give warning before passing.
- Move off the trail when stopping.
- Take nothing except photographs.
- Clean up after yourself & your pets.
- Keep your pets under control & on-leash.
- Don't feed the wildlife. Increasing a species' food supply can disturb the balance of nature.
- Stay on the trail. Making a detour around a muddy patch will destroy vegetation.

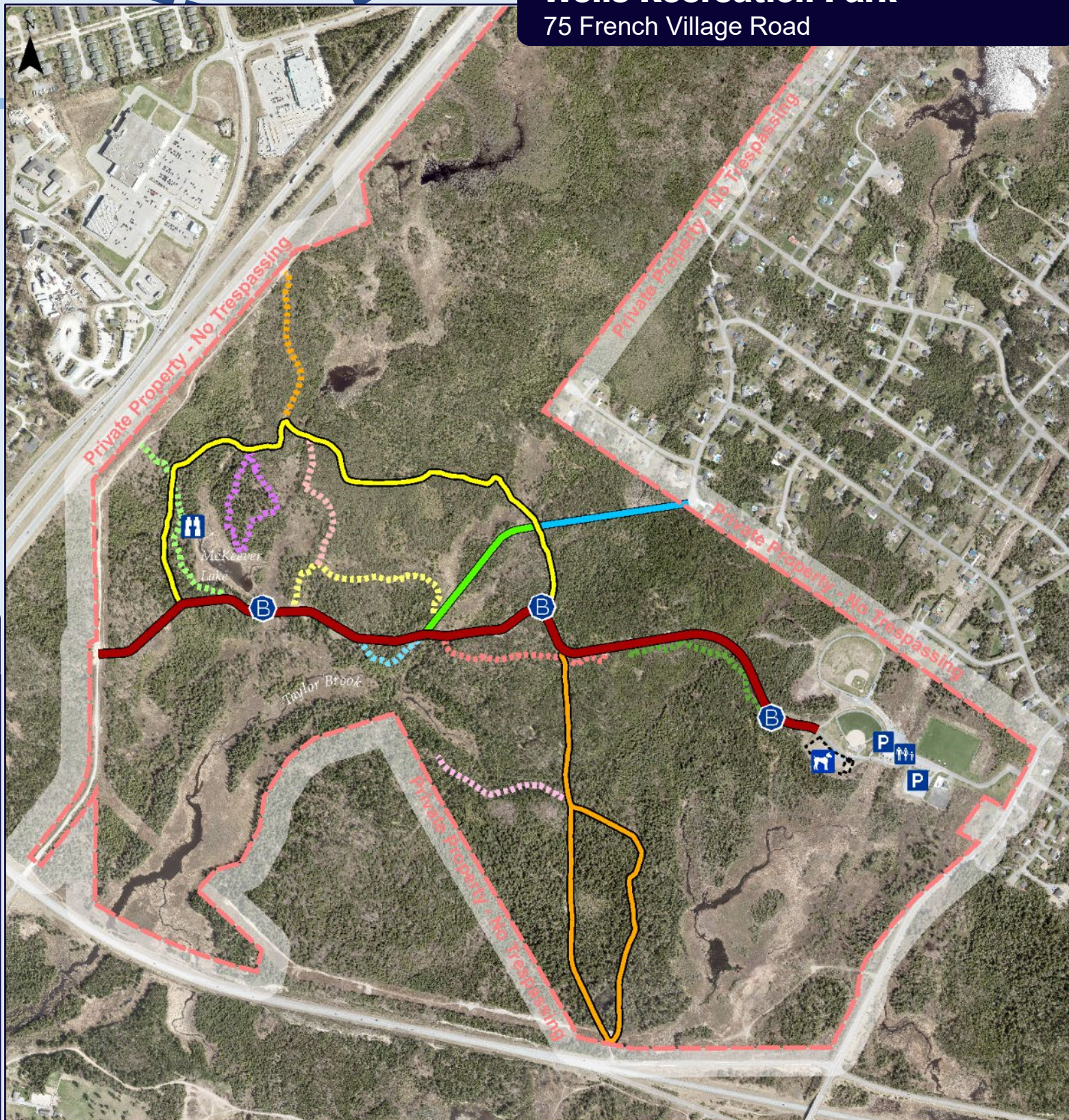
Rothesay Parks & Trails Overview



FOR MORE INFORMATION VISIT:
www.rothesay.ca/recreation/parks-and-playgrounds/

Wells Recreation Park

75 French Village Road



Parking	Groomed Trails	Non-Groomed Trails
Dog Park	Main Trail (1.7 km)	Rocky Forest Trail
Bench & Waste Bin	Taylor Brook Trail (1.4 km)	Nuthatch Alley
Washrooms	McKeever Lake Loop (2.2 km)	Little Gully
Lookout	McKeever Lake Bypass (0.3 km)	Brookside Trail
	Rodney Connector (0.3 km)	Beaver Lodge Loop
		Whiskey Jack Way
		Coyote Pines Access Trail
		Jack Pine Grove



ROTHESAY

Park & Trail Maps

Your Guide to Rothesay's Outdoor Recreation!

Rothesay's Parks & Recreation Department strives to provide well-maintained outdoor recreational spaces throughout the community.

Our parks and trails are not supervised. Please use them at your own risk. Rothesay is not responsible for any loss, damage, or injury during use.

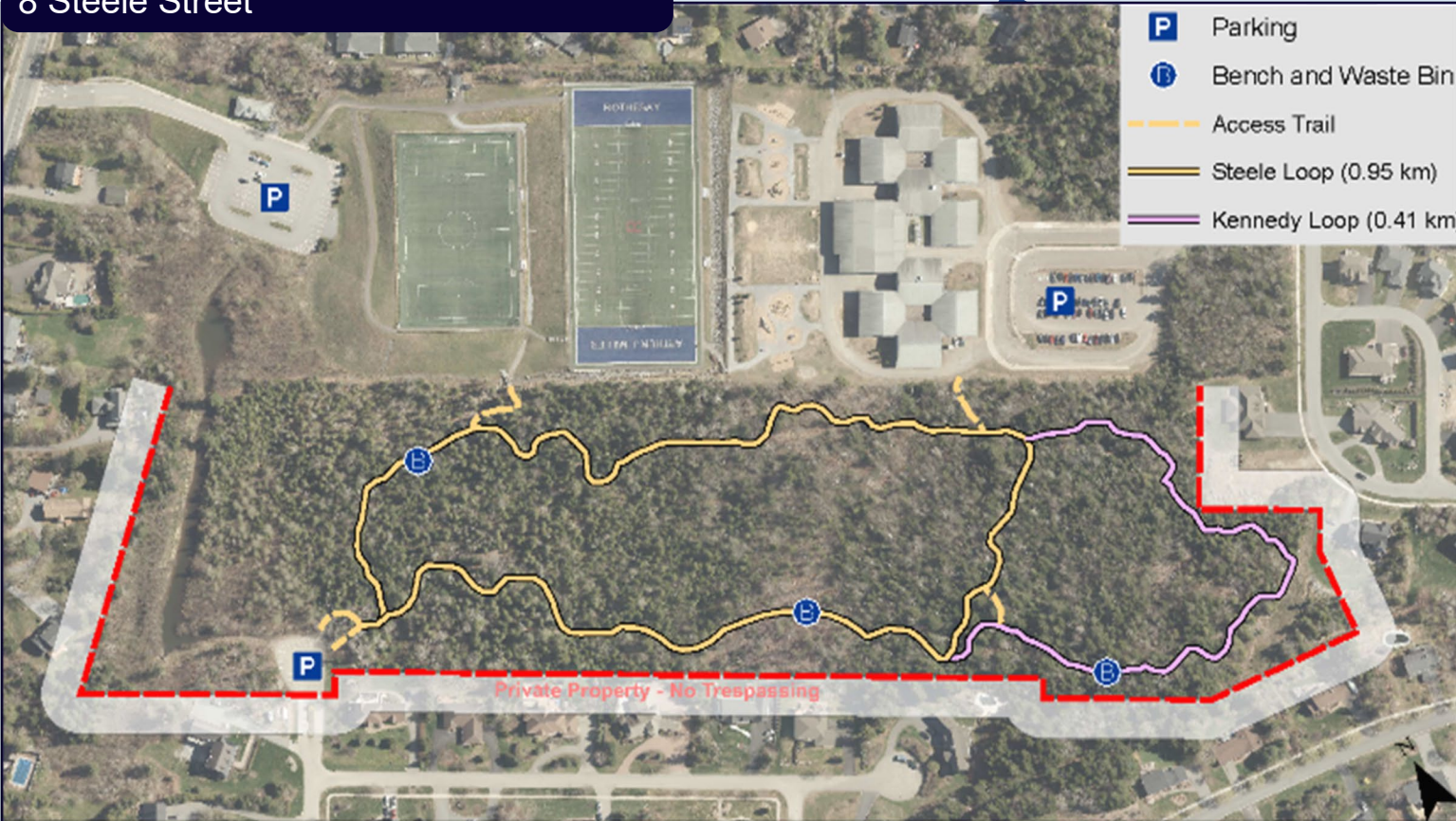
- Pick up a printed brochure at:
70 Hampton Road, Rothesay, NB
- www.rothesay.ca
- @RothesayNB
- 506-848-6600
- @RothesayNB
- rothesay@rothesay.ca
- @RothesayNB

Attention Dog Owners:
 Dogs must ALWAYS be on-leash on any property that is not privately owned by you, including all parks and trails. For off-leash activities, visit the Dog Park at Wells Recreation Park. Please scoop the poop, bag it, and throw it out!

East Riverside-Kingshurst Park
2602 Rothesay Road



Steele-Kennedy Nature Park
8 Steele Street



Bi-Centennial Park
401 NB Route 111



Hillside Trail
Grove Avenue

