



DOG SAFETY

The Importance of Leashing Your Dog in Public Spaces

PEOPLE

Be Courteous to Others

Trail users, neighbors, and other residents have a right to enjoy being outdoors without your dog bothering them. Even if your dog does not jump or charge at people, people do not know your dog and may be afraid of all dogs. Additionally, people with allergies, people with ailments, elderly people, pregnant people, and small children may not be able to tolerate your dog's advances.



CARS

Be Safe Around Moving Traffic

When a dog is off leash, even with perfect recall, they could end up being in the wrong place at the wrong time. Even well-behaved dogs may suddenly run in the path of a moving car or not be seen by someone backing up in a parking lot. Parking lots, sidewalks, and roadside excursions are safer with a leash.



OTHER DOGS

Be in Control of Your Dog's Interactions

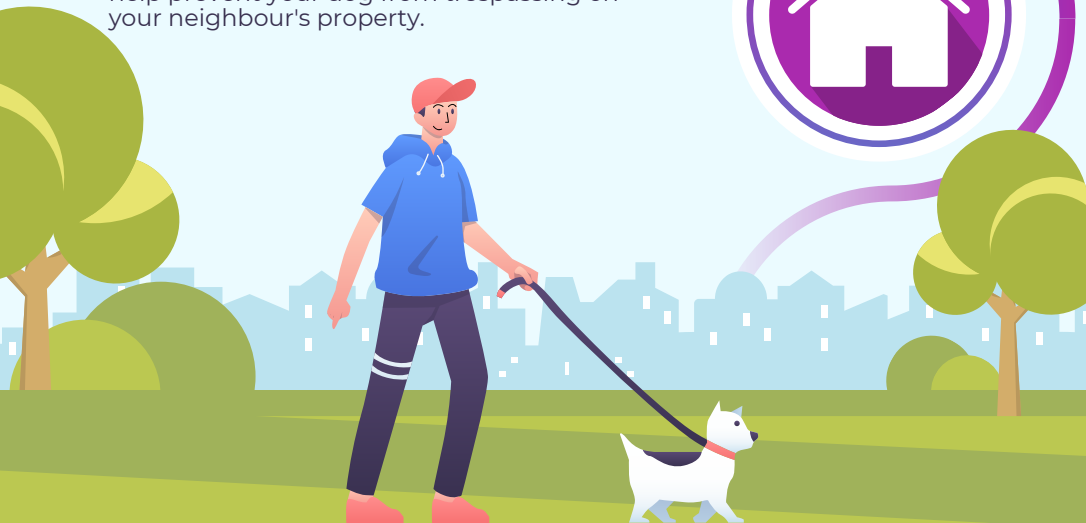
Having your dog on a leash means you are in control of their interactions with other dogs. Not all dogs are friendly, enjoy meeting other dogs off leash, spayed or neutered, or being charged at by an unknown dog. Your off-leash dog could get into a fight if they approach a reactive on-leash dog.



PROPERTY

Be a Good Neighbour

Having your dog on a leash means you can help prevent your dog from trespassing on your neighbour's property.





DOG SAFETY

The Importance of Leashing Your Dog in Public Spaces

ENVIRONMENT

Be Aware of Hazards

Prevent your dog from eating things they shouldn't such as garbage, offerings from strangers, animal feces, and non-edibles. Having them on a leash keeps them close and in eyesight of any hazards that could make them sick or catch a disease.



LOSS PREVENTION

Be in Control of Your Dog's Whereabouts

By keeping your dog on a leash, they will be less likely to get lost. Your dog could run away, chase after an animal, someone could steal your dog, or some well-meaning citizen could mistake your dog for being a lost or stray dog and pick them up. They won't go on solo exploratory missions, and you'll know exactly where they are and what they're doing if they are on a leash.



BY-LAWS

It's the Law!

The by-law is in place to protect other members of the public and your pet from injury. Dogs **MUST** always be on a leash when on public property (any property that is not privately owned by you). This includes **ALL** Town Trails. Remember that picking up after your dog is considerate and is the law.



PLEASE PICK UP AFTER YOUR DOG

Being a Good Neighbour is Easy...

SCOOP the POOP, BAG IT & THROW IT OUT!

- It is YOUR responsibility
- It is the LAW
- It keeps our community CLEAN
- It prevents DISEASES from spreading
- It keeps our trails ENJOYABLE for all

