



GREEN PHASE

AT THE ROTHESAY HIVE

AS OF SEPTEMBER 22, 2021

Please note the following public health requirements, subject to change as required:

- **Proof of vaccination or medical exemption is REQUIRED.**
- **Masks Requirement: Facemasks are REQUIRED at the Rothesay HIVE. Masks may be removed during physical fitness classes, or when eating / drinking as long as physical distancing is maintained.**
- **Registration is required for all programs marked with a: "R"**
- **Coffee & Chats, Card & Board Games, and Puzzles & Crosswords are drop-in programs that do not require registration, however visitors MUST sign-in at the welcome desk with proof of vaccination or medical exemption.**
- **Visitors are encouraged to practice physical distancing at all times.**
- **Hand sanitizer is available at the welcome desk.**
- **Visitors are encouraged to practice good personal hygiene (cough/sneeze in elbow, wash hands, use hand sanitizer etc.).**
- **Visitors are encouraged to self-monitor for COVID-19 symptoms.**
- **Visitors must stay at home if they are ill or have two or more symptoms of COVID-19, and are encouraged to contact 8-1-1.**

We ask that everyone continue to support and respect our policies and each other's personal comfort levels.

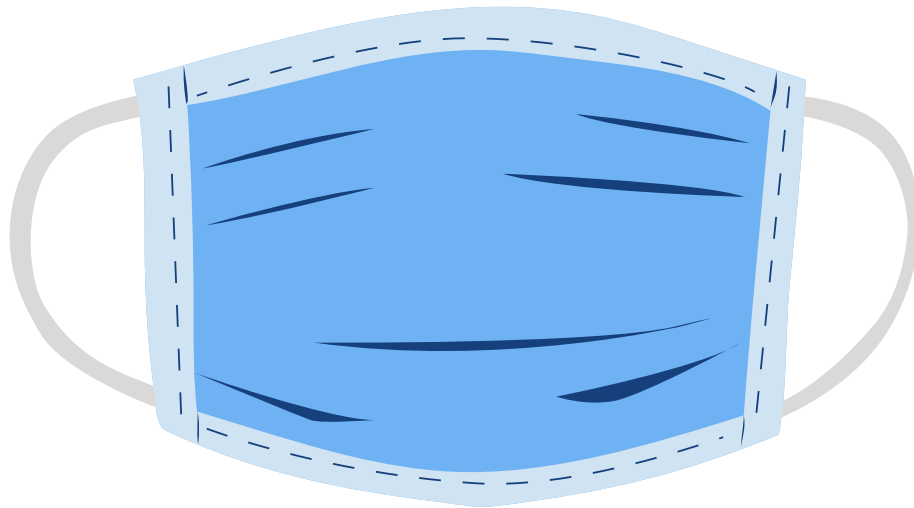
Your continued cooperation and patience is greatly appreciated.



GREEN PHASE

AT THE ROTHESAY HIVE

AS OF SEPTEMBER 22, 2021



COMMUNITY FACE MASKS ARE REQUIRED AT THE ROTHESAY HIVE.

Masks may be removed during physical fitness classes, or when eating / drinking as long as physical distancing is maintained.





GREEN PHASE

AT THE ROTHESAY HIVE

AS OF SEPTEMBER 22, 2021



All visitors are **REQUIRED** to show proof of vaccination or medical exemption.