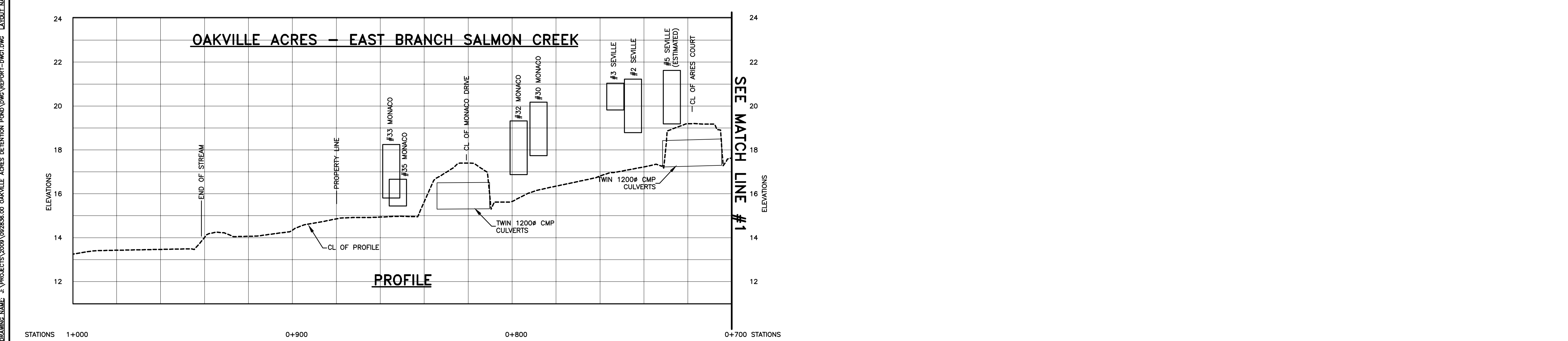
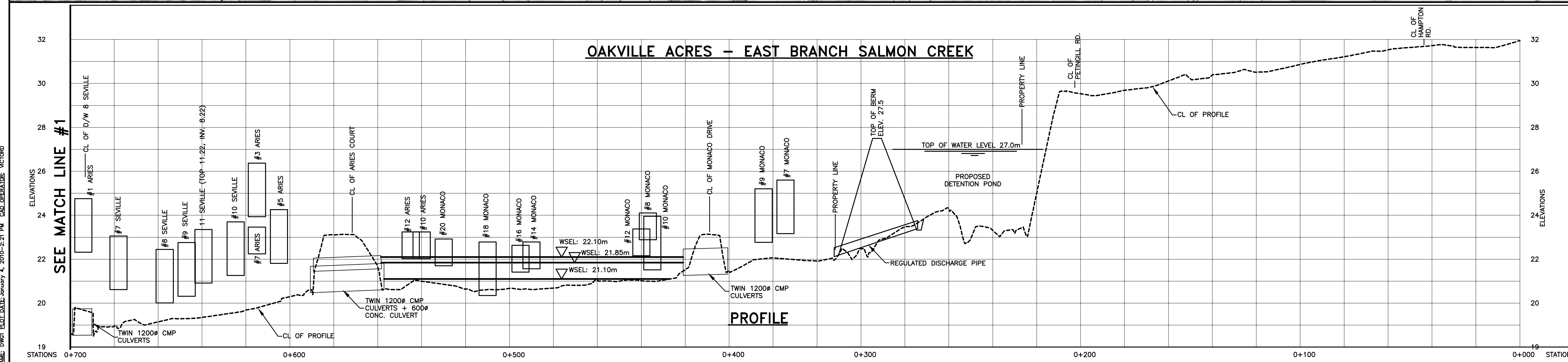


LEGEND

PROPOSED	EXISTING
SANITARY MANHOLE (SMH)	○
CATCH BASIN (CB)	□
STORM MANHOLE (STMH)	⊗
SANITARY SEWER	—SW—
SANITARY FORCE MAIN	—FM—
STORM SEWER	—ST—
WATER MAIN	—W—
COMBINED SEWER	—CS—
PROPERTY LINE	—PL—
EASEMENT	—EAS—
EDGE OF PAVEMENT	—E/P—
U/G ELECTRICAL LINE	—E—
U/G TELEPHONE LINE	—T—
CURB	—CURB—
FENCE	—X—X—X—
DITCH	—DITCH—
UTILITY POLE	●UP
LIGHT STANDARD	⊠
GATE VALVE	⊗GV
CURB STOP	⊗CS
VALVE IN CHAMBER	⊗Vch
FIRE HYDRANT	⊗
CULVERT	—CULVERT—
CONTOURS	—12.0—
SEDIMENT CONTROL FENCE	—SCF—
SEDIMENT CONTROL BERM	—SCB—

- NOTES**
1. ALL DIMENSIONS ARE IN MILLIMETRES.
 2. ALL ELEVATIONS ARE IN GEODETIC METRES.
 3. ALL CHANGES ARE IN METRES.
 4. LOCATION OF EXISTING SERVICES, STRUCTURES AND BUILDINGS APPROXIMATE ONLY.
 5. ALL FIELD SURVEY INFORMATION PROVIDED BY CBCL LIMITED.



B	ISSUED FOR FINAL REPORT	JAN 05/10	
A	ISSUED FOR REPORT	DEC 10/09	
No.	Description	Date	By

Revision or Issue

TOWN OF ROTHEsay
 70 Hampton Road
 Rothesay, N.B.
 E2E 5L5

PRELIMINARY DESIGN
OAKVILLE ACRES
 DETENTION POND AND DIVERSION
 PLAN PROFILE
 EAST BRANCH SALMON CREEK
 STA. 0+000 - 0+942

CBCL CBCL LIMITED
 Consulting Engineers

Scale: HORZ: 1:1000
 VERT: 1:100

Date	DEC 2009	Drawn	VJD
Designed	EMD	Checked	KDT
Approved	EMD	Approved	EMD
Contract No.	092836.00	Sheet of	N/A
CBCL I.D. No.	N/A	Revision	
Drawing No	1		B

DRAWING NAME: I:\PROJECTS\2009\092836.00 OAKVILLE ACRES DETENTION POND\WORK REPORT-DWG.DWG LAYOUT NAME: DWG1 BUILT DATE: January 4, 2010 2:21 PM CAD OPERATOR: VICTORIO

THIS DRAWING IS NOT TO BE REVISED WITHOUT THE EXPRESSED APPROVAL OF THE RESPONSIBLE PROFESSIONAL UNDER WHOSE AUTHORITY THE DOCUMENT WAS SEALED